

\$5,672,000 - 4110 Weichold Rd, San Antonio

MLS® #1443768

\$5,672,000

Bedroom, Bathroom, 1,543,984 sqft
Commercial on 35 Acres

N/A, San Antonio, TX

HIGH TRAFFIC LOCATION ON IH 10 NEAR 1604 INTERSECTION WITH NO FLOODPLAIN * LARGE TOYOTA SUPPLIER TO BUILD NEW PLANT IN MARION JUST 10 MILES AWAY * 16" WATER LINE ON PROPERTY RUNS DOWN WEICHOLD RD (EAST CENTRAL WATER UTILITY) AND SEWER (SARA) ON PROPERTY *

Essential Information

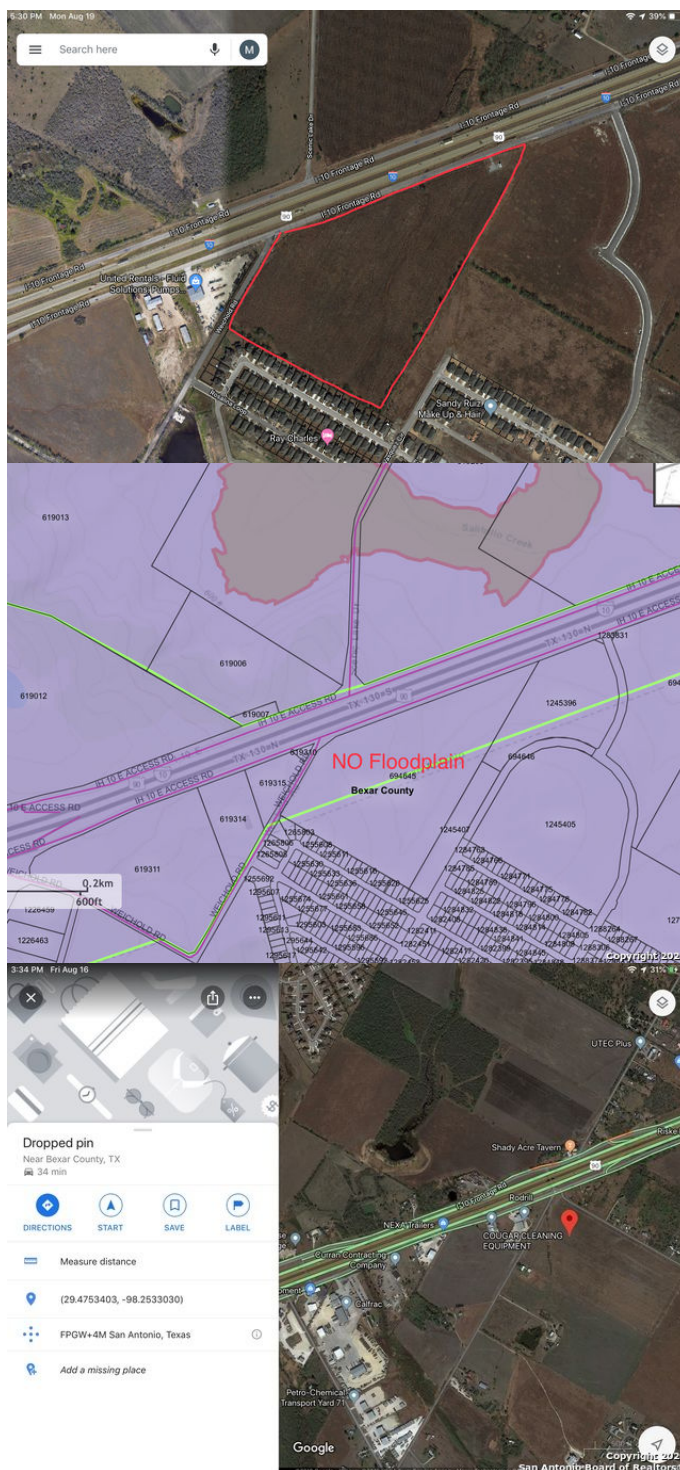
MLS® #	1443768
Price	\$5,672,000
Square Footage	1,543,984
Acres	35.45
Type	Commercial
Sub-Type	Commercial Land
Status	Active

Community Information

Address	4110 Weichold Rd
Area	2001
Subdivision	N/A
City	San Antonio
County	Bexar
State	TX
Zip Code	78109

Amenities

Utilities	Water, Sewer
-----------	--------------



Additional Information

Date Listed March 6th, 2020
Days on Market 236
Zoning C-2, OCL

Listing Details

Listing Office RE/MAX Preferred, REALTORS

The data relating to real estate on this web site comes in part from the Internet Data Exchange program of the MLS of the San Antonio Board of Realtors®, and is updated as of October 28th, 2020 at 4:06pm CDT (date/time). IDX information is provided exclusively for consumers' personal, non-commercial use and may not be used for any purpose other than to identify prospective properties consumers may be interested in purchasing.