

\$538,335 - - Se Loop 410, San Antonio

MLS® #1546444

\$538,335

Bedroom, Bathroom, 133,729 sqft
Commercial on 0.00 Acres

N/A, San Antonio, TX

Location- Location- Location- C-3 NA & I-1, 3 +/- acres, Commercial Lot Property perfectly located on the access road of SE Loop 410 with frontage road, providing fantastic visibility, high traffic, and accessibility for your future development, between Espada Rd. and Roosevelt AVE. Located in an area of rapid commercial and residential growth with proximity to the historic San Antonio Missions. Well situated near IH-37, Brooks City Base and Stinson Municipal Airport

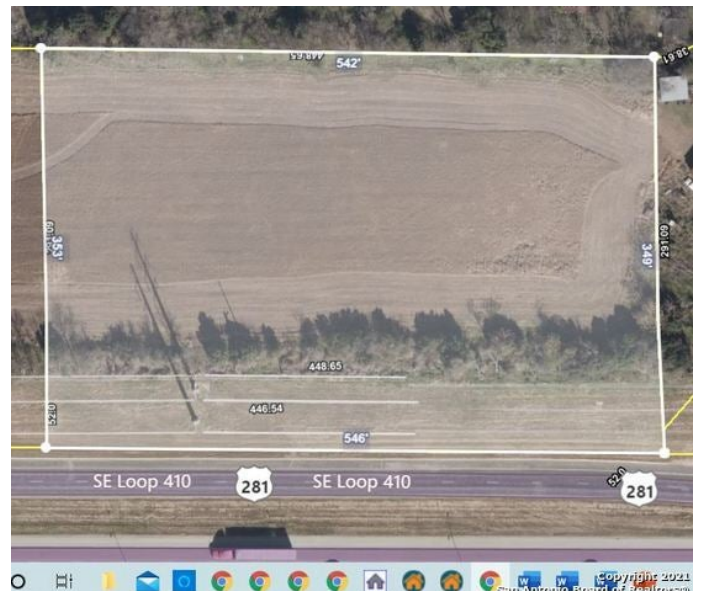


Essential Information

MLS® #	1546444
Price	\$538,335
Square Footage	133,729
Acres	0.00
Type	Commercial
Sub-Type	Commercial Land
Status	Active Option

Community Information

Address	- Se Loop 410
Area	2100
Subdivision	N/A
City	San Antonio
County	Bexar
State	TX
Zip Code	78214



Amenities

Utilities	None
-----------	------

Additional Information

Date Listed	July 17th, 2021
-------------	-----------------

Days on Market	1035
----------------	------

Zoning	C-3 NA & I-1
--------	--------------

Listing Details

Listing Office	Copernicus Realty
----------------	-------------------

The data relating to real estate on this web site comes in part from the Internet Data Exchange program of the MLS of the San Antonio Board of Realtors®, and is updated as of May 18th, 2024 at 6:36am CDT (date/time). IDX information is provided exclusively for consumers' personal, non-commercial use and may not be used for any purpose other than to identify prospective properties consumers may be interested in purchasing.