

\$355,000 - 218 E Park Ave, San Antonio

MLS® #1673085

\$355,000

Bedroom, Bathroom, 1,884 sqft
Commercial on 0.19 Acres

N/A, San Antonio, TX

Great opportunity to purchase a C-1 zoned building located off E Park Ave, Just one building in from McCullough Ave. This one story building boast great interior details. Three rooms, bedrooms or convert to offices with 2 bathrooms and kitchen. Commercial use can host four to five office spaces with two bathrooms. Wood floors. Great location on the border of Downtown in Tobin Hill. Lots of traffic and good visibility for any business. Great for Medical office so close to Metropolitan Hospital. Law office is another superior location to Downtown Courthouse.

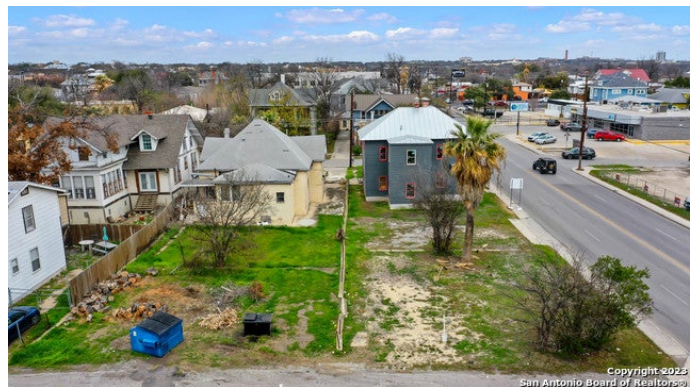
Built in 1910

Essential Information

MLS® #	1673085
Price	\$355,000
Square Footage	1,884
Acres	0.19
Year Built	1910
Type	Commercial
Sub-Type	Office/Medical/Prof Bldg
Status	Active

Community Information

Address	218 E Park Ave
Area	0900
Subdivision	N/A
City	San Antonio



County	Bexar
State	TX
Zip Code	78212-4330

Amenities

Utilities	Electricity, Other, Water
Parking Spaces	2

Interior

# of Stories	1.0
Stories	1

Exterior

Roof	Composition
Construction	Brick

School Information

District	San Antonio I.S.D.
----------	--------------------

Additional Information

Date Listed	March 13th, 2023
Days on Market	430
Zoning	C-1

Listing Details

Listing Office	San Antonio Portfolio KW RE
----------------	-----------------------------

The data relating to real estate on this web site comes in part from the Internet Data Exchange program of the MLS of the San Antonio Board of Realtors®, and is updated as of May 16th, 2024 at 2:36pm CDT (date/time). IDX information is provided exclusively for consumers' personal, non-commercial use and may not be used for any purpose other than to identify prospective properties consumers may be interested in purchasing.