

# \$299,000 - 24460 Mathis Rd, Elmendorf

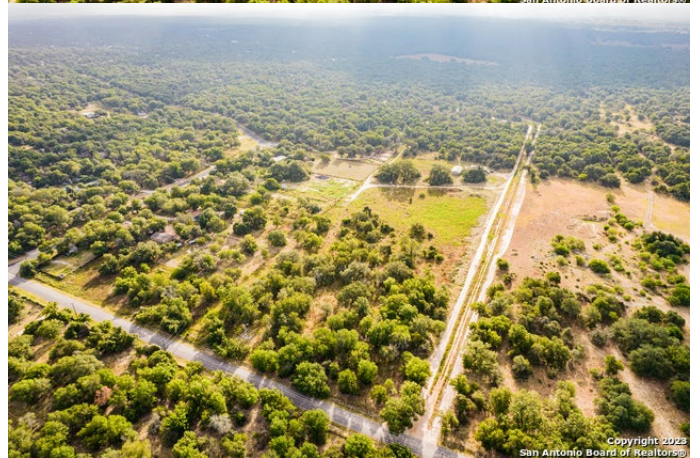
MLS® #1700978

**\$299,000**

0 Bedroom, 0.00 Bathroom,  
Farm Ranch on 0.00 Acres

N/A, Elmendorf, TX

**UNRESTRICTED LAND!!! SELLER FINANCING AVAILABLE!!!** Situated just outside the city limits, this remarkable property offers an incredible opportunity to own 9.78 acres of unrestricted land. If you've been searching for a blank canvas where you can let your imagination run wild, look no further. With no zoning restrictions or limitations, this parcel presents endless possibilities for you to create your ideal lifestyle. Whether you envision a residential sanctuary, a commercial venture, an agricultural endeavor, or a combination of various pursuits, this unrestricted land provides the freedom to turn your dreams into reality. As you explore the property, you'll be captivated by the natural beauty that surrounds you. The gently rolling terrain, mature trees, and open spaces offer a picturesque setting for any vision you have in mind. Design and build your dream home exactly the way you want it, or establish a business that caters to the needs of the community. The choice is yours. Enjoy the serenity of rural living while still benefiting from the convenience of nearby amenities. Located just a short distance from shops, restaurants, schools, and medical facilities, this property offers the best of both worlds. Experience the freedom and privacy that come with living outside the city limits, while still being within reach of everything you need. With 9.78 acres of unrestricted land, you'll have ample space to explore a wide range of possibilities. Create expansive gardens, establish a working



farm, set up recreational facilities, or subdivide the land for multiple uses. Let your imagination soar as you make the most of this rare opportunity. Don't miss out on the chance to own this exceptional piece of unrestricted land in Elmendorf, TX. Whether you're an entrepreneur, a visionary, or simply someone seeking the ultimate freedom to create, this is the perfect canvas for your ambitions.

**Essential Information**

MLS® #	1700978
Price	\$299,000
Bathrooms	0.00
Acres	0.00
Type	Farm Ranch
Status	Active

**Community Information**

Address	24460 Mathis Rd
Area	2003
Subdivision	N/A
City	Elmendorf
County	Bexar
State	TX
Zip Code	78112

**School Information**

District	South Side I.S.D
Elementary	Southside Heritage
Middle	Southside
High	Southside

**Listing Details**

Listing Office	Lockwood Realty Group, LLC
----------------	----------------------------

The data relating to real estate on this web site comes in part from the Internet Data Exchange program of the MLS of the San Antonio Board of Realtors®, and is updated as of May 27th, 2024 at 12:21am CDT (date/time). IDX information is provided exclusively for consumers' personal, non-commercial use and may not be used for any purpose other than to identify prospective properties consumers may be interested in purchasing.