

\$925 - 1623 N Interstate 35 1, San Antonio

MLS® #1848799

\$925

1 Bedroom, 1.00 Bathroom, 2,944 sqft

Rental on 0.13 Acres

GOVERNMENT HILL, San Antonio, TX

Situated in the heart of downtown San Antonio, this property offers great access to the city's most sought-after destinations. Within a 10-minute walk, you'll find yourself at the iconic Pearl Brewery and the picturesque San Antonio Riverwalk, where you can enjoy a delightful blend of culture, entertainment, and stunning views. The Grayson St. entertainment district is just a 5-minute walk away, offering a plenty of restaurants, bars, and entertainment venues to suit every taste.

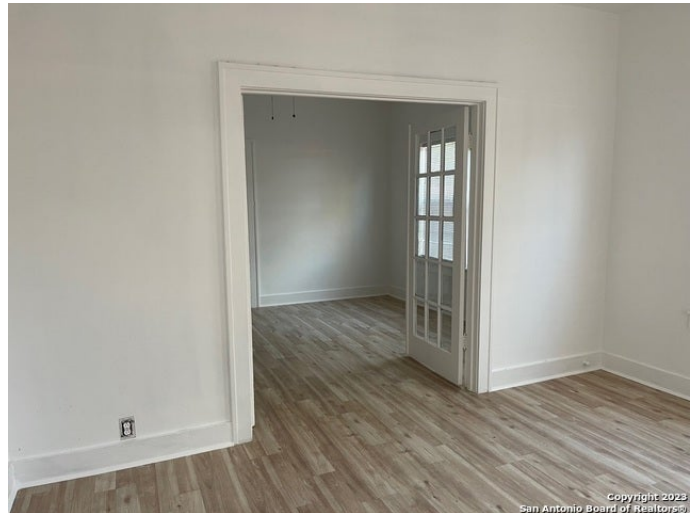
Built in 1946

Essential Information

MLS® #	1848799
Price	\$925
Bedrooms	1
Bathrooms	1.00
Full Baths	1
Square Footage	2,944
Acres	0.13
Year Built	1946
Type	Rental
Style	Two Story
Status	Active

Community Information

Address	1623 N Interstate 35 1
Area	1300
Subdivision	GOVERNMENT HILL



City	San Antonio
County	Bexar
State	TX
Zip Code	78208-1140

Amenities

Amenities	Near Shopping
Parking	None/Not Applicable
Pool	None

Interior

Interior	Not Applicable
Appliances	Ceiling Fans, Washer, Dryer, Stove/Range, Refrigerator, Smoke Alarm, Carbon Monoxide Detector
Heating	Central
Cooling	One Window/Wall
Fireplaces	Not Applicable

School Information

District	San Antonio I.S.D.
Elementary	Hawthorne
Middle	Haworthne Academy
High	Edison

Additional Information

Date Listed	March 11th, 2025
Days on Market	216

Listing Details

Listing Agent	Adrian Gracia
Listing Office	EIM Real Estate Advisors, LLC

The data relating to real estate on this web site comes in part from the Internet Data Exchange program of LERA MLS®, and is updated as of October 13th, 2025 at 12:37pm CDT (date/time). IDX information is provided exclusively for consumers' personal, non-commercial use and may not be used for any purpose other than to identify prospective properties consumers may be interested in purchasing.