

\$1,970 - 1138 Gibbs 201, San Antonio

MLS® #1849120

\$1,970

3 Bedroom, 3.00 Bathroom, 1,367 sqft

Rental on 0.12 Acres

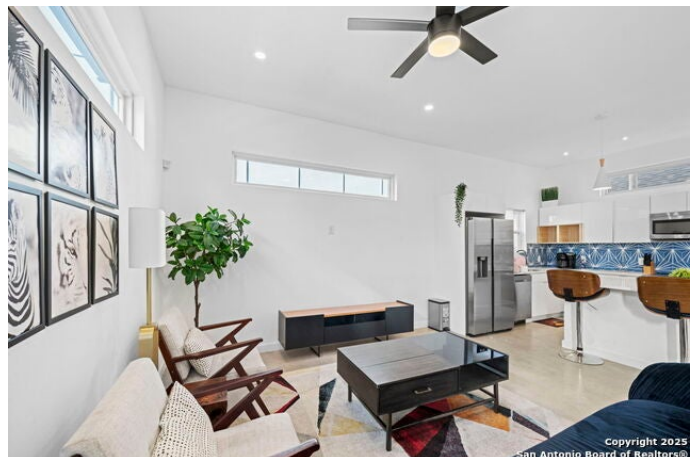
E HOUSTON SO TO HEDGESSA, San Antonio, TX

BACK TO SCHOOL SPECIAL!! This is a limited-time offer and only applies to applications received and approved **BEFORE AUGUST 22ND!** This stunning two-story townhome is the epitome of modern living, perfectly located in the heart of downtown. With its sleek design and abundant natural light, it offers both style and comfort. The spacious layout is ideal for a small family embarking on their homeownership journey looking for a cozy yet sophisticated space. Just a quick 9-minute drive to The PEARL, this home is surrounded by everything you need, from trendy cafes to local shops and cultural hubs. With its blend of modern finishes and unique character, this townhome exudes both charm and poise. The open-concept living area is perfect for entertaining or relaxing, while the upstairs offers tranquil bedrooms with plenty of space to unwind. Whether you're hosting friends or enjoying quiet moments at home, this property offers the perfect balance of convenience, style, and character.

Built in 2020

Essential Information

MLS® #	1849120
Price	\$1,970
Bedrooms	3
Bathrooms	3.00



Full Baths	2
Half Baths	1
Square Footage	1,367
Acres	0.12
Year Built	2020
Type	Rental
Style	Two Story
Status	Price Change

Community Information

Address	1138 Gibbs 201
Area	1200
Subdivision	E HOUSTON SO TO HEDGESSA
City	San Antonio
County	Bexar
State	TX
Zip Code	78202

Amenities

Amenities	None
Parking	One Car Garage
Pool	None

Interior

Interior	One Living Area, All Bedrooms Upstairs, Breakfast Bar, Eat-In Kitchen, High Ceilings, High Speed Internet, Laundry Room, Laundry Upper Level, Open Floor Plan, Utility Room Inside, Walk in Closets
Appliances	City Garbage service, Cook Top, Ceiling Fans, Custom Cabinets, Disposal, Dryer Connection, Dishwasher, Electric Water Heater, Microwave Oven, Self-Cleaning Oven, Security System (Owned), Stove/Range, Washer Connection
Heating	Central
Cooling	One Central
Fireplaces	Not Applicable

Exterior

Exterior	Aluminum, Cement Fiber
Roof	Composition
Foundation	Slab

School Information

District	San Antonio I.S.D.
Elementary	Washington
Middle	Wheatley Emerson

Additional Information

Date Listed	March 12th, 2025
Days on Market	215

Listing Details

Listing Agent	Mizani Simpson
Listing Office	Stonepoint Properties Inc

The data relating to real estate on this web site comes in part from the Internet Data Exchange program of LERA MLS®, and is updated as of October 13th, 2025 at 12:37pm CDT (date/time). IDX information is provided exclusively for consumers' personal, non-commercial use and may not be used for any purpose other than to identify prospective properties consumers may be interested in purchasing.