

\$355,500 - 15518 Doublecreek Dr, San Antonio

MLS® #1914224

\$355,500

4 Bedroom, 3.00 Bathroom, 2,396 sqft

Residential on 0.20 Acres

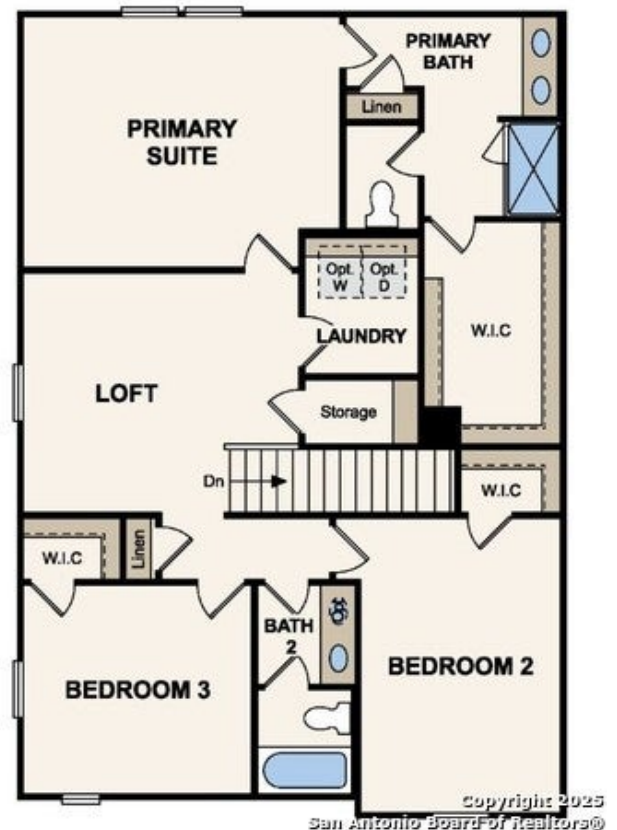
SUMMERLIN, San Antonio, TX

The impressive Eleanor floor plan offers a popular open-concept layout designed for comfort and style. The porch entry leads past a convenient mud room into an expansive great room, which encompasses a dining area and a well-equipped kitchen with a large walk-in pantry and a center island. You'll also find a roomy bedroom with a walk-in closet and a full bath on this level. There are three generous bedrooms upstairs-each with a walk-in closet!-including a luxurious owner's suite with a private bath showcasing dual vanities and a walk-in shower. A versatile loft space completes this plan. Additional home highlights and upgrades: 36" white kitchen cabinets, quartz countertops and backsplash. Luxury wood-look vinyl plank flooring in common areas. Stainless-steel appliance package with gas range oven. Recessed lighting throughout home. Cultured marble countertops and modern rectangular sinks in bathrooms. Mother-in-law suite. Landscape package with full sprinkler system. Covered patio. Garage door opener with two remotes. Exceptional included features, such as our Century Home Connect smart home package and more!

Built in 2025

Essential Information

MLS® #	1914224
Price	\$355,500



Bedrooms	4
Bathrooms	3.00
Full Baths	3
Square Footage	2,396
Acres	0.20
Year Built	2025
Type	Residential
Sub-Type	Single Family Detached
Style	Two Story
Status	New

Community Information

Address	15518 Doublecreek Dr
Area	3000
Subdivision	SUMMERLIN
City	San Antonio
County	Bexar
State	TX
Zip Code	78253

Amenities

Amenities	None
Parking	Two Car Garage
Pool	None

Interior

Interior	Liv/Din Combo, Island Kitchen, Walk-In Pantry, Game Room, Utility Room Inside, High Ceilings, Open Floor Plan, Cable TV Available, High Speed Internet, Laundry Room
Appliances	Washer Connection, Dryer Connection, Cook Top, Built-In Oven, Microwave Oven, Stove/Range, Disposal, Dishwasher, Ice Maker Connection, Water Softener (owned), Vent Fan, Smoke Alarm, Garage Door Opener
Heating	Central
Cooling	One Central
Fireplaces	Not Applicable
# of Stories	2.0
Stories	2

Exterior

Exterior	Brick, Stucco
Lot Description	Cul-de-Sac/Dead End, On Gr
Roof	Composition
Construction	New
Foundation	Slab

School Information

District	Northside
Elementary	Chumbley Elementary
Middle	Bernal
High	John Marshall Harlan HS

Additional Information

Date Listed	October 10th, 2025
Days on Market	1
HOA Fees	400.00
HOA Fees Freq.	Annually

Listing Details

Listing Agent	Dayton Schrader
Listing Office	eXp Realty



The data relating to real estate on this web site comes in part from the Internet Data Exchange program of LERA MLS®, and is updated as of October 12th, 2025 at 2:07am CDT (date/time). IDX information is provided exclusively for consumers' personal, non-commercial use and may not be used for any purpose other than to identify prospective properties consumers may be interested in purchasing.